

ENGINEERING AND SERVICE INFORMATION

Date: 1st June 2014 1/3

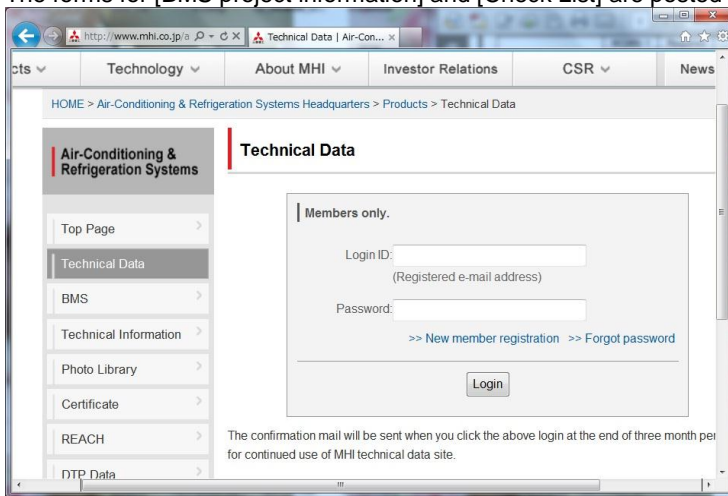
Subject: Renew BMS Project Information sheets

For the project applying BMS units, there were some troubles to be claimed, because the user's requirement, usage environment and usage conditions were departed from the usage limitation of the MHI's BMS unit. Therefore, in order to avoid such trouble, MHI requested you to inform of the project details when placing purchase order to MHI, and MHI replied with some comment whether it is applicable or not. This time, add new unit and renew "BMS Project Information" forms. Since these renewal forms are posted on the [BMS] banner of MHI's Website, please download it for applicable BMS unit model (WGWNB, BGWNA, BGWNA256 or LGWNA) and fill all necessary items in it and submit it together with purchasing order sheet to MHI overseas sales section in Japan or MHI overseas representative office (MHIAE, MHIAA, MHIAS and etc.) which you are ordinarily contacting.

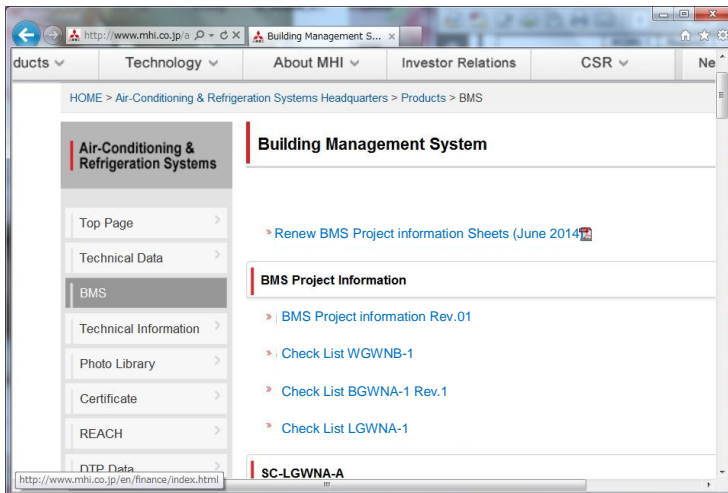
1) Documents to be submitted to MHI when placing purchase order

		WGWNB	BGWNA	LGWNA	Remarks
1. BMS Project information		Required	Required	Required	Required for all BMS units
2. Check list	WGWNB-1	Required	—	—	Select the suitable form for the BMS unit from the WEB posted on and fill all necessary items in the form. Check number of sheet.
	BGWNA-1 Rev.1	—	Required	—	
	LGWNA-1 Rev.1	—	—	Required	

The forms for [BMS project information] and [Check List] are posted on the following MHI's Website.



Input your Login ID and Password, and press [Login] button.



When clicking [BMS] banner, "BMS Management System" list are displayed as left figure. Please download the "BMS Project information" sheet and "Check List xxxxx" for the BMS unit model applied.

The "BMS Project Information" the technical data mentioned in item 3) are posted on.

2) The form of confirmation note from MHI

BMS project technical confirmation Rev. 1
Check results by MHI

No.

Project Name:

Model Name:
 SC-LGWNA-A SC-WGWNB-A SC-WGWNB-B SC-BGWNA-A SC-BGWNA-B SC-BGWNA256-A SC-BGWNA256-B
 (L) (W-A) (W-B) (B-A) (B-B) (B256-A) (B256-B)

- Approve
- Approve with the following condition
- Disapprove (Need more information. / Need test result.)
 - Check the communication between Gateway and host computer before installing air conditioner. (All)
 - Keep to control limitations(I/U, O/U, Center console) set out in manual. (All)
 If control limitation is exceeded, please divide network according to manual.
 - Change the setting of SL2NA/SL3NA(SL4) remote controller Lock/Unlock function to be "Invalid". (All)
 Process; SL2NA : Cut J1, SL3NA(SL4) : Function setting in screen. Use RC Lock/Unlock function from gateway
 Delete the registration of unconnected indoor units in SL2NA/SL3NA(SL4) to prevent from communication traffic.
 - In the case of using previous Superlink, change the selection switch to Previous Superlink side. (All)
 - Ethernet network is recommended to use as exclusive line. (W-A/W-B)
 In case of office LAN, explain specification to network administrator before installing and get IP address.
 In case of WAN network, please consult to MHI.
 - Send the wiring diagram of watt meters to MHI. (W-B/B-B/B256-B)
 - Check the power consumption data during commissioning. (W-B/B-B/B256-B)
 - Please inform customer that we cannot guarantee the power consumption data in case the gateway failure would be happened. (W-B/B-B/B256-B)
- Send the following files to the system integrator
 - Product specification (All)
 - Configuration manual (All)
 - XIF file (Lgwna_aa.xif) (L)
 - XML communication manual (W-A/W-B)
 - ObjectID list for HOST computer (B-A/B-B/B256-A/B256-B)
 - ObjectID_LIST_BGWNA_A_original.xls (B-A)
 - ObjectID_LIST_BGWNA_B_original.xls (B-B)
 - ObjectID_LIST_BGWNA256_A_original.xls (B256-A)
 - ObjectID_LIST_BGWNA256_B_original.xls (B256-B)
 - Csv files for Air-con Cell settings (W-A/W-B/B-A/B-B)
 - PACinfo_WGWNB_A_original.csv (W-A)
 - WGWconfig_WGWNB_B_original.csv (W-B)
 - PACinfo_BGWNA_A_original.csv (B-A)
 - BGWconfig_BGWNA_B_original.csv (B-B)
 - PACinfo_BGWNA256_A_original.csv (B256-A)
 - BGWconfig_BGWNA256_B_original.csv (B256-B)
 - Pre connection test plan (B-A/B-B/B256-A/B256-B)
 - Others (_____) (All)

Technical comment from MHI

Sales comment from MHI

3) "BMS Project Information" data (Just for your reference)

The following technical data for BMS unit are posted on the [BMS] banner of MHI's Website.

So please utilize them, if necessary.

	SC-WGWNB-A	SC-WGWNB-B
Product Specification	120601_WGWNB-A_ProductSpec_V10.pdf	120601_WGWNB-B_ProductSpec_V10.pdf
Config Manual	120601_WGWNB-A_B_ConfigManual_V10.pdf	
Installation Manual	WGWNB_A Installation Manual.pdf	WGWNB_B Installation Manual.pdf
User's Manual	WGWNB_A User's Manual.pdf	WGWNB_B User's Manual.pdf
Cell-PACaddress setting csv file	PACinfo_WGWNB_A_original.csv	WGWconfig_WGWNB_B_original.csv
Cell-PACaddress setting xml file	DefaultPACinfo.xml	
Virtual Air-con Manual	120601_WGWNB-A_B_VirtualAirConManual_V10.pdf	
XML Manual	120601_WGWNB-A_B_XMLManual_V10.pdf	
Multi LanguageManual	120601_WGWNB-A_B_MultiLanguageManual_V10.pdf	
Multi Language setting file	defaultlanguage.xml	

	SC-BGWNA-A	SC-BGWNA-B
Product Specification	091201_BGWNA_A_Product_Spec10.pdf	100601_BGWNA_B_Product_Spec20.pdf
Config Manual	100301_BGWNA_A Config_Manual_Ver10.pdf	100801_BGWNA_B Config_Manual_Ver10.pdf
Installation Manual	BGWNA_A Installation Manual.pdf	BGWNA_B Installation Manual.pdf
Cell-PACaddress setting file	PACinfo_BGWNA_A_original.csv	BGWconfig_BGWNA_B_original.csv
Object ID list	ObjectID_LIST_BGWNA_A_original.xls	ObjectID_LIST_BGWNA_B_original.xls
Virtual Air-con Manual	100701_BGWNA_A_VirtualAirConManual.pdf	100701_BGWNA_B_VirtualAirConManual.pdf

	SC-BGWNA256-A	SC-BGWNA256-B
Product Specification	130801_BGWNA256_A_Product_Spec10.pdf	131201_BGWNA256_B_Product_Spec10.pdf
Config Manual	130801_BGWNA256_A Config_Manual_Ver10.pdf	140115_BGWNA256_B Config_Manual_Ver10.pdf
Installation Manual	BGWNA256_A Installation Manual.pdf	BGWNA256_B Installation Manual.pdf
Cell-PACaddress setting file	PACinfo_256_BGWNA256_A_original.csv	BGWconfig_256_BGWNA256_B_original.csv
Object ID list	ObjectID_LIST_BGWNA256_A_original.xls	ObjectID_LIST_BGWNA256_B_original.xls
Virtual Air-con Manual	130801_BGWNA256_A_VirtualAirConManual.pdf	140111_BGWNA256_B_VirtualAirConManual.pdf

	SC-LGWNA-A
Product Specification	100101_LGWNA_A_Product_Spec11.pdf
Config Manual	100301_LGWNA_A Config_Manual_Ver10.pdf
Installation Manual	LGWNA_A Installation Manual.pdf
XIF file	Lgwna_aa.xif